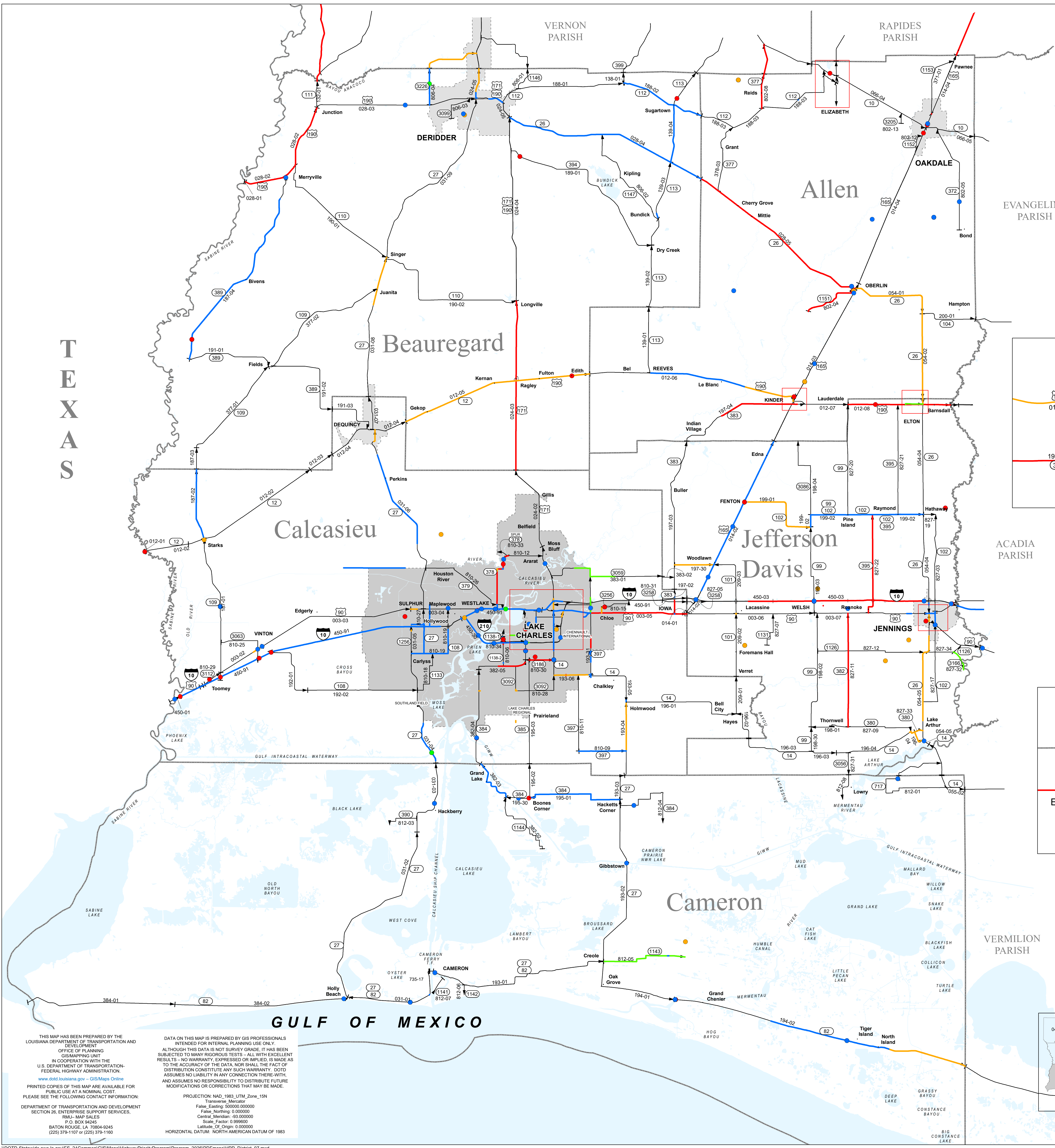
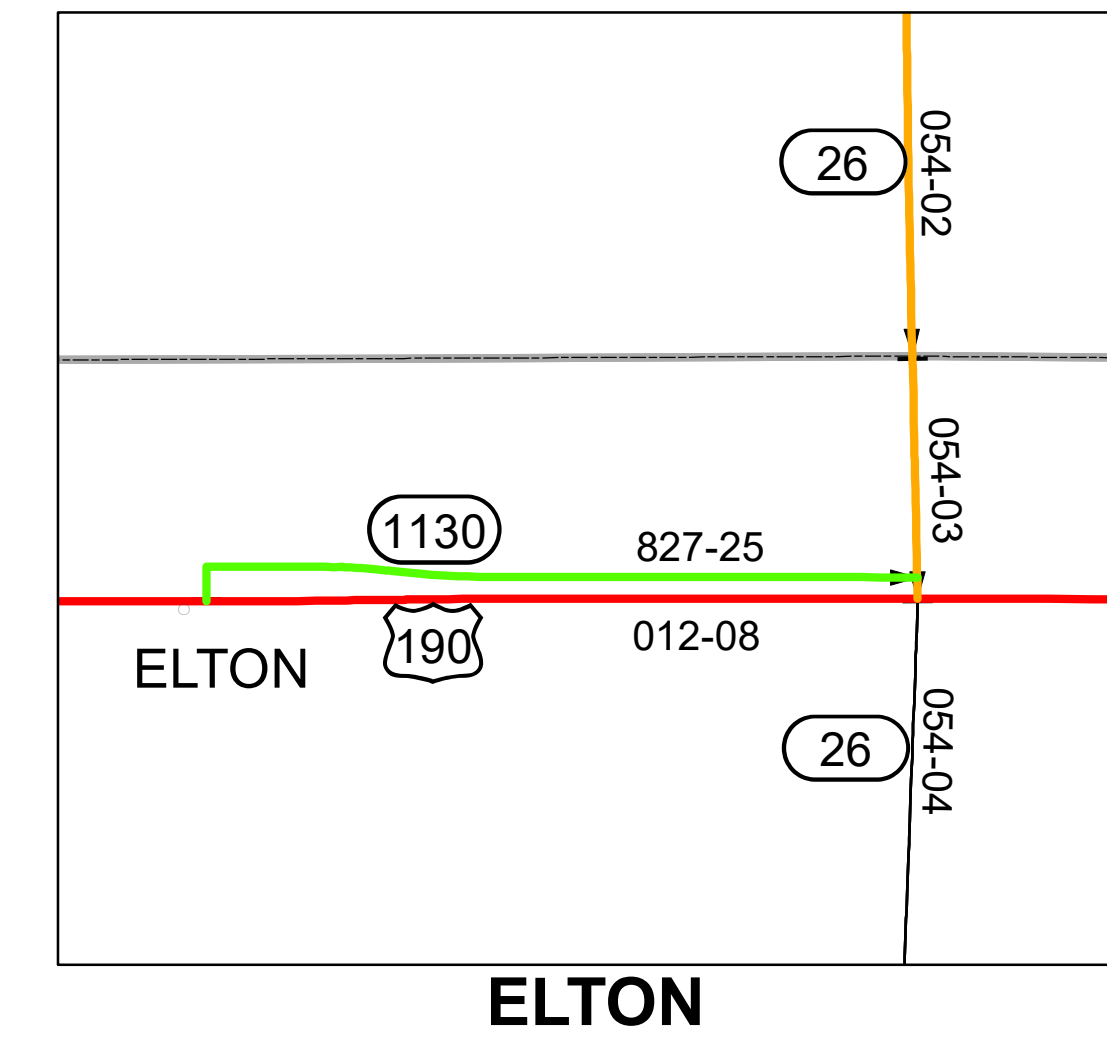
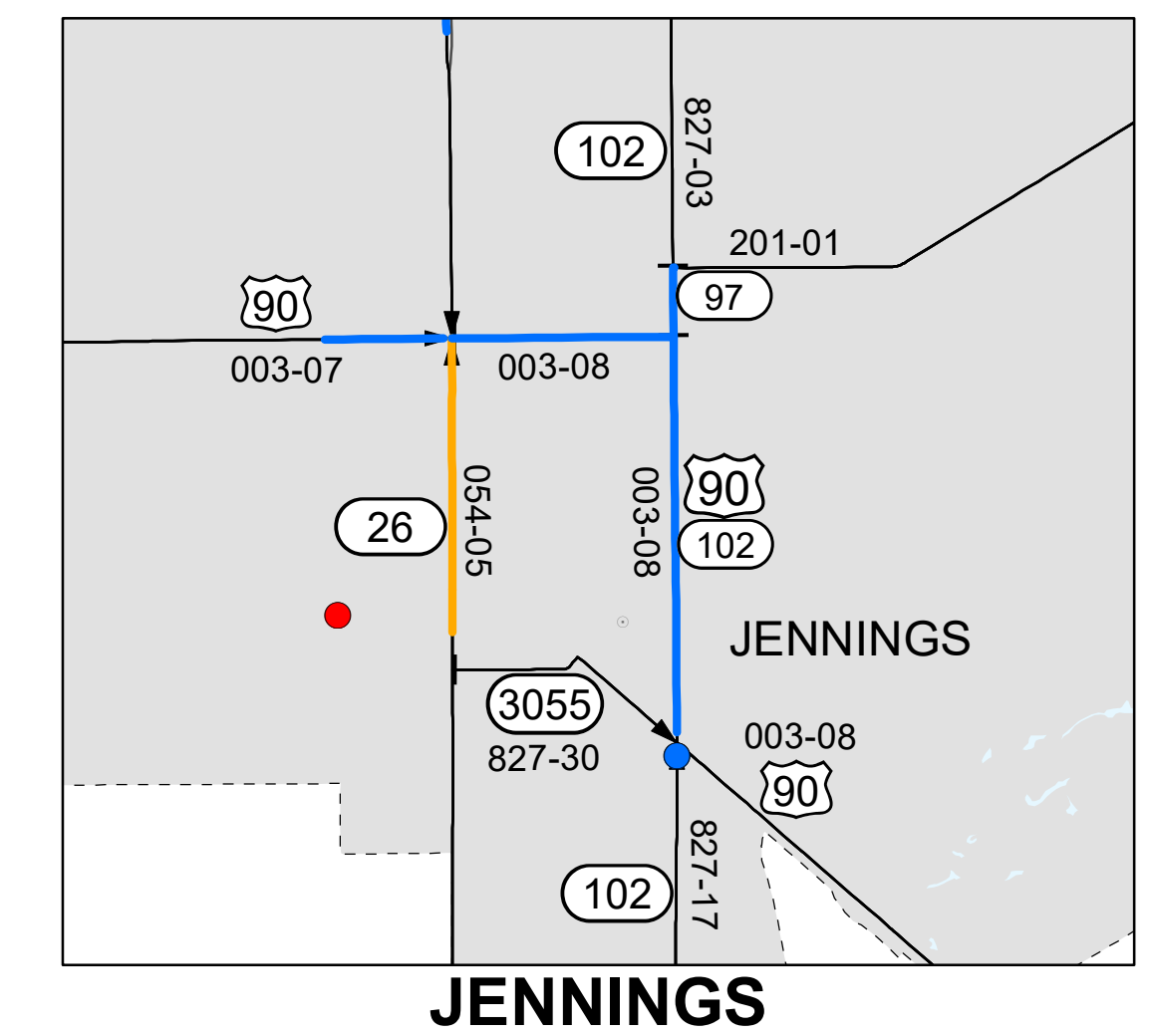
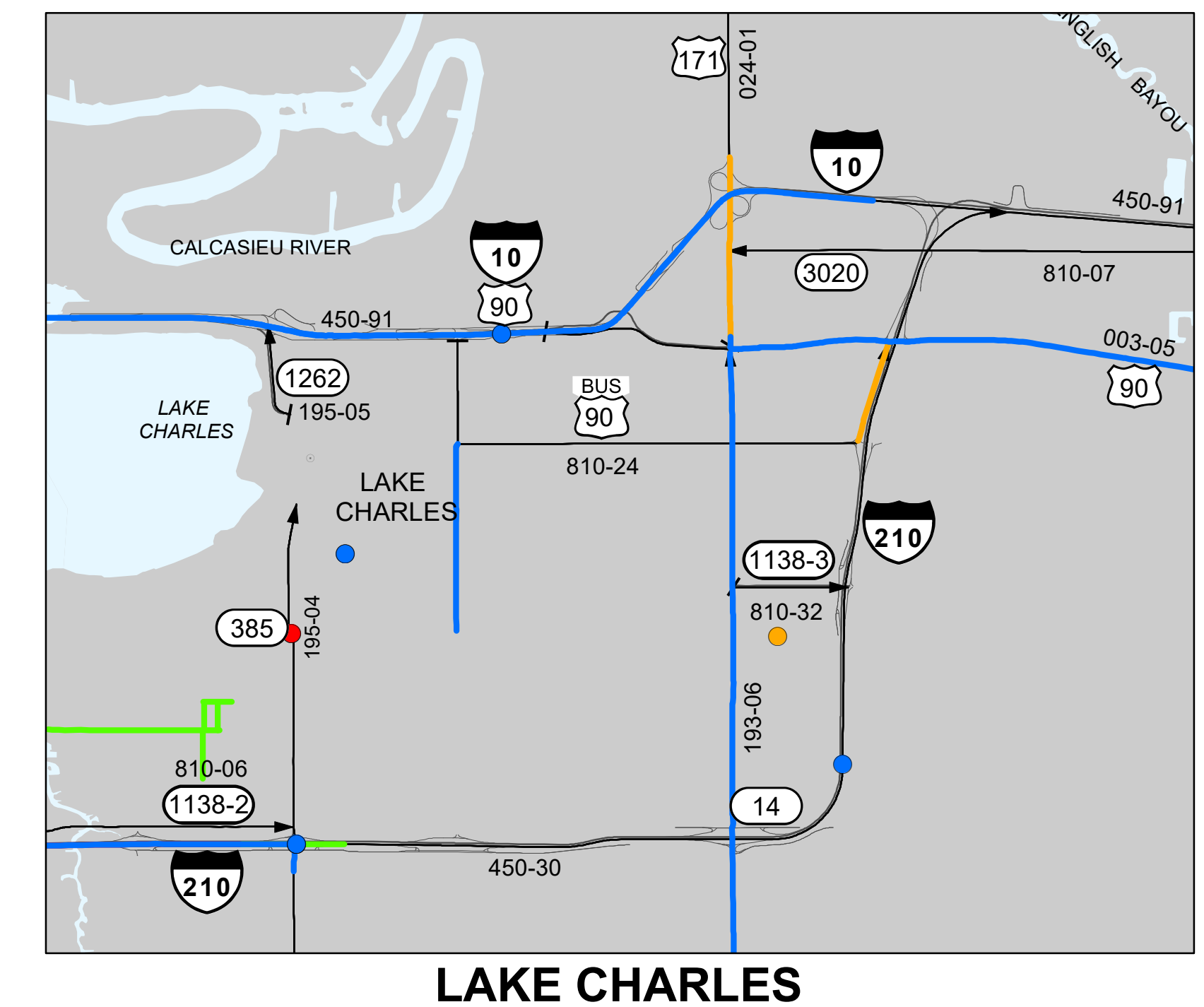
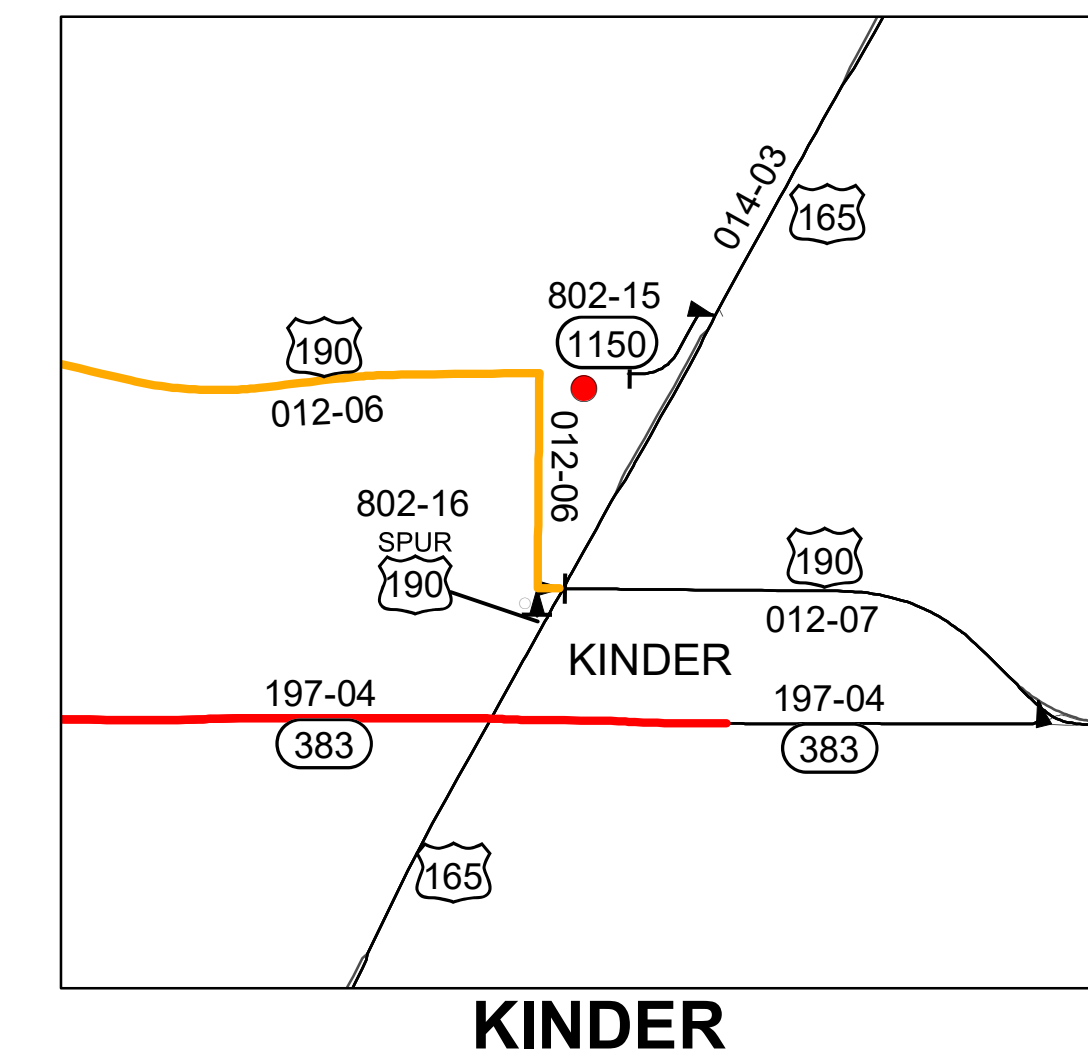
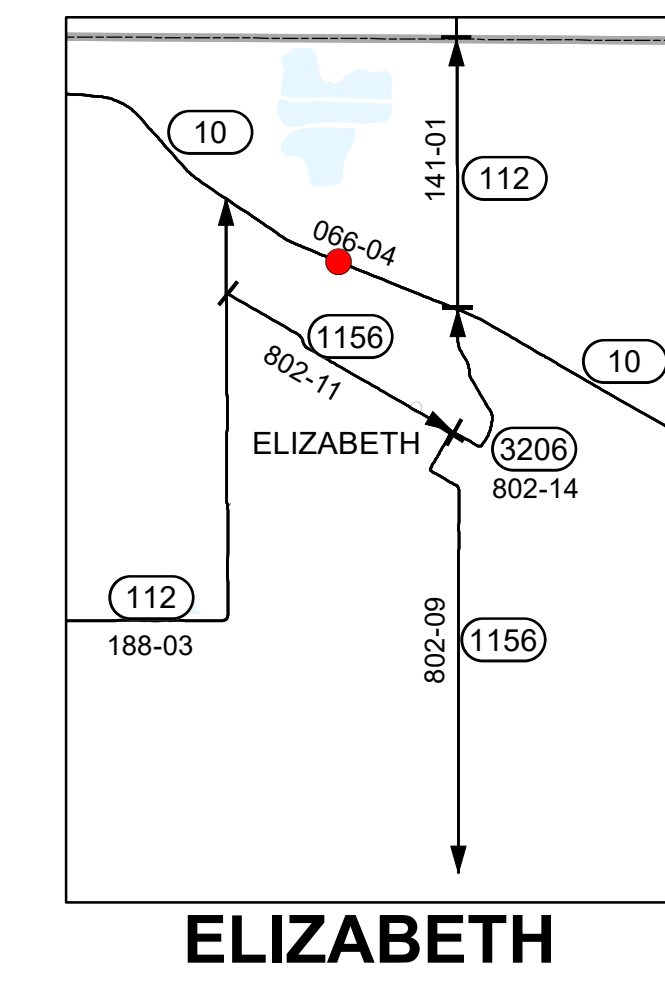


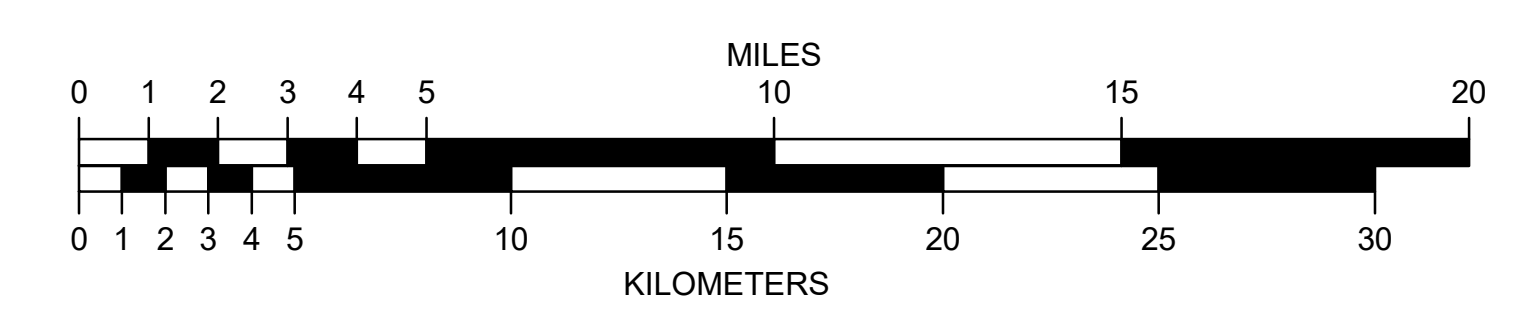
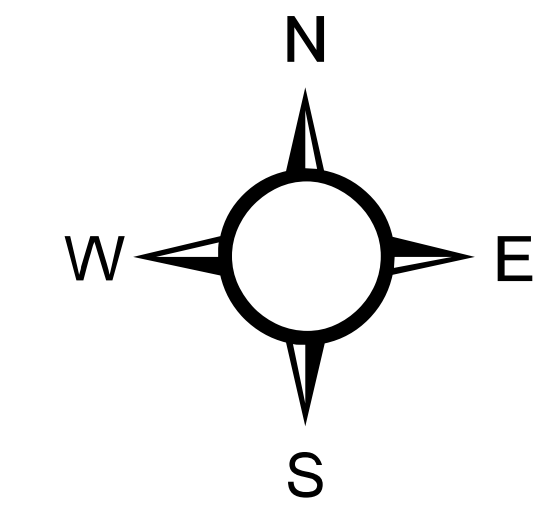
TEXAS

- PARISH SEATS
- MUNICIPALITIES
- COMMUNITIES
- PROJECTS LET BETWEEN JULY 2019 AND SEPTEMBER 2023
- PROJECTS TO BE LET BETWEEN OCTOBER 2024 AND JUNE 2025
- PROJECTS SCHEDULED TO BE LET IN SFY 25-26 (Next Fiscal Year)
- OTHER PROJECTS BEING DEVELOPED
- CONTROL SECTIONS / STATE ROUTES
- PROPOSED ROADS
- FERRY BOATS
- PARISH LINES
- URBANIZED AREAS
- URBAN AREAS



Map Updated: October 2024

MAPS FOR LEGISLATIVE PUBLIC HEARINGS FOR SFY 2025-2026 HIGHWAY PRIORITY PROGRAM DISTRICT 07



THIS MAP HAS BEEN PREPARED BY THE LOUISIANA DEPARTMENT OF TRANSPORTATION AND DEVELOPMENT OFFICE OF PLANNING GIS/MAPPING UNIT IN COOPERATION WITH THE U.S. DEPARTMENT OF TRANSPORTATION FEDERAL HIGHWAY ADMINISTRATION www.gisdotd.louisiana.gov - GIS Maps Center PRINTED COPIES OF THIS MAP ARE AVAILABLE FOR PUBLIC USE AT A NOMINAL COST. PLEASE SEE THE FOLLOWING CONTACT INFORMATION: DEPARTMENT OF TRANSPORTATION AND DEVELOPMENT SECTION 26, ENTERPRISE SUPPORT SERVICES. RMJ - MAP SALES P.O. BOX 9245 BATON ROUGE, LA 70804-9245 (225) 379-1107 or (225) 379-1190

PROJECTION: NAD_1983_UTM_Zone_15N
 Transverse_Mercator
 False_Scaling: 500000.000000
 False_Northing: 0.000000
 Central_Meridian: -93.000000
 Scale_Factor: 0.999600
 Latitude_Of_Origin: 0.000000
 HORIZONTAL DATUM: NORTH AMERICAN DATUM OF 1983